

KEYPOINTS

LOOKOUT/SITE WARDEN (LKT)

Issue ten valid from March 2019

CERTIFICATION REQUIRED: CURRENT SENTINEL
CARD ENDORSED WITH PTS AND LKT COMPETENCIES

Keypoint Cards have been produced for many of the track safety competencies, as a reminder of the main duties, rules and requirements.

Further copies are available from Willsons Group Services.

To obtain an order form, email:

denise@willsons.com

(phone **01636 702334** or fax **01636 701396**)



Put your knowledge to the test with our
FREE revision tests!

Complete our revision tests to help prepare yourself for upcoming courses and assessments. They can also be used to help maintain and improve any existing knowledge.

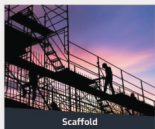
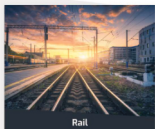
[View Revision Tests](#)

No Pass, No Pay!

If you are unable to pass your course or assessment first time, we will put you on the next available course **FREE** of charge.

[0208 596 5121](tel:02085965121)

Click on any category to view our
upcoming courses



BASIC REQUIREMENTS

Your Responsibilities

Be equipped for the weather conditions. Alert the COSS or SWL if you feel:

- unwell
- fatigued
- that you need a Physical Needs Break
- or are unable to carry out your duties for any other reason

You must have your Sentinel card with you, endorsed PTS & LKT or SW or both



If you are acting as Site Warden, you must wear a white armlet or badge with 'SITE WARDEN' in blue letters.

If you are acting as Lookout, you must wear a white armlet or badge with 'LOOKOUT' in red letters.



Make sure you have this equipment with you and check that it works properly:



(on track circuit lines)

(if needed by lookout)

SITE WARDEN DUTIES

The COSS or SWL will tell you:

- where to stand
- who to watch
- where they will be working
- the limits of the Safe System of Work.

Particular attention should be paid to group members who are less experienced, they are identified by a blue safety helmet and may be in possession of a Track Visitors Permit (TVP).

Warn anyone who strays beyond the limits by shouting “get back”. If they don’t move straight away, give a series of short, sharp blasts on your whistle or horn until they move back.

Make sure you:

- stay alert at all times (the group will be in danger if you don’t)
- switch off your mobile phone (unless you are also the COSS or SWL and need it on to speak to e.g. the signaller, PC or ES)
- watch the group carefully.

Do not:

- allow yourself to be distracted
- take part in the work.
- carry out any other duties, unless you are also the COSS or SWL

LOOKOUT DUTIES

The COSS or SWL will tell you:

- where to stand in a position of safety
- if you are to be a site lookout, a distant lookout or an intermediate lookout
- from which direction trains will approach and on which lines
- who to warn
- where they will be working
- how to give the warning (whistle, horn, touch etc), if necessary you must also shout
- where the position of safety is for the group.

Particular attention should be paid to group members who are less experienced; they are identified by a blue safety helmet.

Warn the group as soon as you see an approaching train or the distant/intermediate Lookout waves their chequered flag. If anyone in the group doesn't move straight away, give a series of short, sharp blasts on your whistle or horn, or repeat the touch warning until they do acknowledge.

If you are acting as distant or intermediate Lookout:

- stand in a position of safety (unless the site of work is moving and you need to get past an obstruction)
- wave your flag when you see an approaching train, until the lookout you are warning acknowledges in the same manner.

Make sure you:

- stay alert at all times (the group will be in danger if you don't)
- switch off your mobile phone
- carefully watch for approaching trains.

Do not:

- allow yourself to be distracted
- take part in the work or have any other responsibilities.

DURING THE WORK

Give a warning and tell the COSS or SWL if:

- someone moves away and you think they might not hear your warning
- you think the method of warning has become unsuitable
- your line of sight becomes blocked
- you need a break or cannot continue.

Don't leave your post until:

- the COSS or SWL tells you
- you are relieved by another competent Lookout/Site Warden.

DISTANT OR INTERMEDIATE LOOKOUTS

Distant/Intermediate Lookouts must remain in a position of safety all the time. The only exception is to pass an obstruction if the site of work is moving. When moving be aware of your personal safety at all times.

LOOKOUT OPERATED WARNING SYSTEMS (LOWS)

You can only operate LOWS equipment if you have been trained to use it and have a valid competency.

LOWS CONTROLLER & LOWS LOOKOUT

Before using LOWS equipment a mapping exercise must be carried out and the data for that location shall be documented and made available.

Equipment must be tested prior to use. Checks should include:

- Is the calibration in date?
- Is there any damage to the equipment?
- Are the units switched on?
- Are the settings correct?
- Do the sirens work and the lights flash?
- Are the batteries fully charged?

Setting up

Until the warning unit is set up and working correctly the group must remain in a position of safety until the COSS or SWL tells them it is safe for work to commence.

If the system fails or it is not possible to obtain the correct signal after three attempts, the use of LOWS must be suspended. An alternative SSOW must be set up, or the work abandoned.

The LOWS Controller must brief the LOWS Lookout(s) on the following:

- Where their position of safety is located
- Methods of communication to include
 - what to do if a problem arises
 - what to do if the Lookout requires a physical needs break
- When to operate the warning.

Battery Maintenance:

- Where possible, rotate the use of available batteries
- Allow batteries to discharge before re-charging

DO NOT:

- Leave batteries connected to equipment when not in use
- Leave batteries on charge
- Top up batteries that have not been used
- Charge batteries in extreme temperatures (Cold /Hot)

Equipment Logbook:

Each use of the equipment must be recorded in the equipment logbook, which includes date and location used and any faults.

IN DARKNESS OR POOR VISIBILITY

You can only act as Lookout in darkness or poor visibility if:

- you are using LOWS
- trains will not approach at more than 20mph and no distant Lookouts are needed
- the work is taking place within an ES's worksite and they have agreed that trains will not move at more than 20mph.

COMMUNICATIONS

Refer to NR9935 Frontline Safety Critical Communications.

This page has been intentionally left blank

Safety Central –The site is your one-stopshop of safety information, advice, resources and useful contacts, designed to promote consistency and best practice across the whole rail industry.

<http://safety.networkrail.co.uk/>

There are two ways to report safety concerns. Your first step should be to tell your supervisor or sponsor. If this isn't possible, you can contact CIRAS –the railway's confidential reporting service –**www.ciras.org.uk**

The purpose of this Keypoint Card is to act as a reminder only. If you are unsure about any issue relating to the information given here, you must refer to the appropriate module of the Rule Book GE/RT 8000Series or Handbook.

In supplying this document, Network Rail makes no warranties, expressed or implied, that compliance with all or any documents it issues is sufficient on its own to check safe systems of work or operation.

Users are reminded of their own duties under health and safety legislation.

NETWORK RAIL, THE QUADRANTMK: ELDER GATE,
MILTONKEYNES MK9 1EN
WWW.NETWORKRAIL.CO.UK

NR9924ISSUE 10 © 2019NETWORK RAIL



FASTLINE
Training Services